

Thank you for downloading this worksheet set from [The Happy Housewife](#). You are free to use it in your own home, church or co-op as long as it abides by the terms listed below. Each worksheet in this set is covered under the copyright of The Happy Housewife.

If you choose to download this worksheet set, you must abide by these terms:

- You may download this printable set to your hard drive and then print them from your home computer. You may use them for your own homeschool students, co-op students, or personal home use.
- You must not remove the copyright notice and website address of The Happy Housewife at the bottom of the worksheet.
- You may not remove the website address of MyGrafico at the bottom of the worksheet.
- You may not alter the worksheet or printable item in any way.
- If you share this worksheet set, please link directly to [The Happy Housewife](#). You may not link to the .pdf file.
- You may not sell or profit from any worksheet in this set from The Happy Housewife in any way.
For example, you may not print and sell items individually or in a kit.
- You may not host this file on your own site or any type of file-sharing site such as Yahoo Groups, Mediafire, or Dropbox.

The human body graphic used in this worksheet set was purchased [Away with the Pixels](#).

Fonts by [Kimberly Geswein](#).

Clipart and fonts used with permission. Copyright remains with the designer.

All other images are in the public domain.

The Human Body - Word Problems

The human hand has 27 bones. The human foot has 26 bones.
How many total bones are in both hands and both feet?



A person breathes an average of 16 times per minute when at rest.
If a person remains at rest for an hour, how many breaths will he take?

An average person takes in about 4.4 pounds of food and drink every day.
How much food and drink will the average person consume during a 30-day month?

Word Jumbles

Unscramble the names of each organ below.

rivel

sgnlu

reaht

dinkey

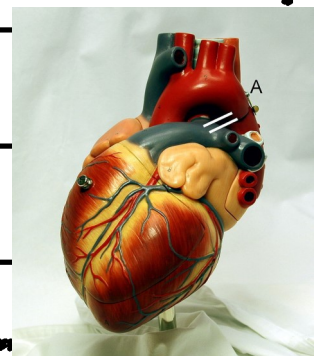
nisk

nabri

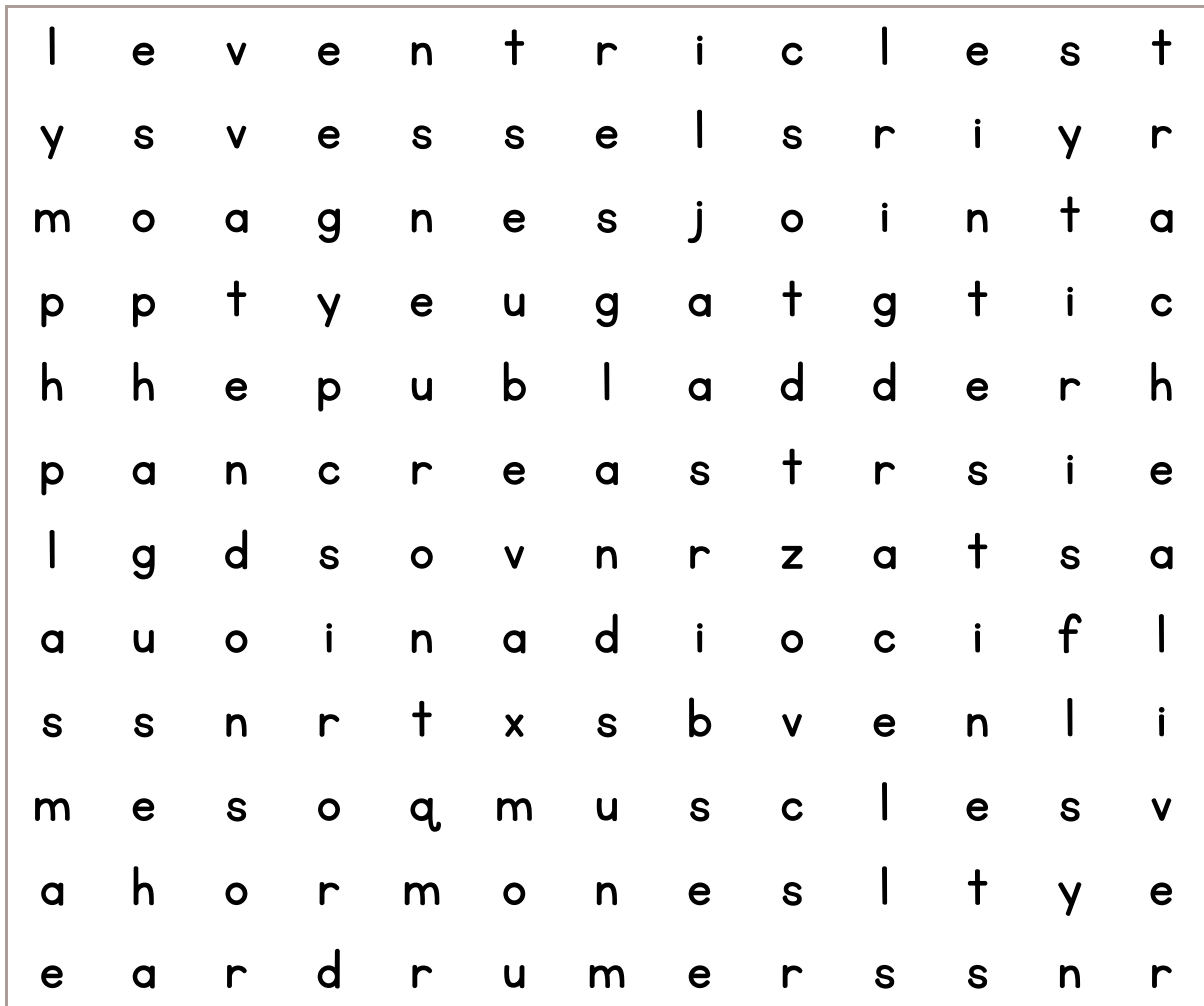
mostcha

The words in the sentence are in the correct order, but the letters in each word are jumbled up!
Unscramble each word to form a sentence on the lines below.

orYu tearh si sa gbi sa uroy stif!



Parts of My Body- Word Search



Find and circle each word in the search above.
When you find the word, cross it off the list.

- | | | | | |
|------------|---------|----------|-----------|----------|
| trachea | liver | hormones | bladder | joints |
| ventricles | plasma | vessels | neuron | pancreas |
| esophagus | lymph | cells | intestine | glands |
| ribs | muscles | eardrum | tendons | iris |



Solve the Code!

Add and subtract using regrouping. Then use the code to discover how long it takes food to travel through your digestive system!

$$\begin{array}{r} 59 \\ + 37 \\ \hline \end{array}$$

(D)

$$\begin{array}{r} 82 \\ - 68 \\ \hline \end{array}$$

(E)

$$\begin{array}{r} 90 \\ - 17 \\ \hline \end{array}$$

(R)

$$\begin{array}{r} 23 \\ + 67 \\ \hline \end{array}$$

(H)

$$\begin{array}{r} 70 \\ + 49 \\ \hline \end{array}$$

(O)

$$\begin{array}{r} 64 \\ - 45 \\ \hline \end{array}$$

(A)

$$\begin{array}{r} 55 \\ + 35 \\ \hline \end{array}$$

(Y)

$$\begin{array}{r} 98 \\ - 29 \\ \hline \end{array}$$

(U)

$$\begin{array}{r} 44 \\ + 58 \\ \hline \end{array}$$

(P)

$$\begin{array}{r} 81 \\ - 67 \\ \hline \end{array}$$

(T)

$$\begin{array}{r} 36 \\ + 56 \\ \hline \end{array}$$

(S)

Write the letter associated with each equation that you solved above to find the answer to the trivia question.

—	—
69	102

—	—
14	119

—	—	—	—	—
14	90	73	14	14

—	—	—	—
96	19	90	92